

INSTITUTIONAL EVALUATION PROGRAMME
EUROPEAN UNIVERSITY ASSOCIATION

**INSTITUTIONAL SELF-EVALUATION REPORT
OF THE
UNIVERSITY OF ÉVORA**

APPENDICES

MARCH 2007

UNIVERSIDADE
 **DE ÉVORA**

APPENDICES

APPENDIX I: Participants in the self-evaluation process	i
APPENDIX II: List of programme degrees offered	iv
APPENDIX III: Geographical position of University main buildings.....	vi
APPENDIX IV: The legal framework of the Portuguese higher education system.....	viii
APPENDIX V: Organisation chart	x
APPENDIX VI: Undergraduate and postgraduate students by departmental area	xii
APPENDIX VII: Budget	xiii
APPENDIX VIII: Academic and non-academic staff.....	xvi
APPENDIX IX: Infrastructures	xxiii
APPENDIX X: Indicators of quality monitoring	xxv

APPENDIX I: PARTICIPANTS IN THE SELF-EVALUATION PROCESS

Steering Committee

Ana Maria Costa Freitas	Vice-Rector, academic staff, associate professor with aggregation, dept. Crop Science
António Heitor Reis	Vice-Rector, academic staff, associate professor, dept. Physics
António Manuel Neto Vaz	President of Pedagogical Council, academic staff, assistant professor, dept. Chemistry
António Marques Ramalhinho	Director of Social Services, post-graduate student
Ausenda Cáceres Balbino	Vice-Rector, academic staff, associate professor, dept. Geosciences
Carlos Falcão Marques	Vice-Rector, academic staff, full professor, dept. Management
Carlos Vieira	Pro-Rector, academic staff, assistant professor, dept. Economics
Daniela dos Santos Castanho	President of the Student's Union, undergraduate student
José Alberto Machado	President of the Scientific Council, academic staff, full professor, dept. History
Nuno Manuel Dias	Administrative Services, non-academic staff

Thematic Work Group 1 - Teaching, Bologna

Ana Maria Costa Freitas (Coordinator)	Vice-Rector, academic staff, associate professor with aggregation, dept. Crop Science
António Manuel Neto Vaz	President of Pedagogical Council, academic staff, assistant professor, dept. Chemistry
Christopher Bochmann	Academic staff, full professor, dept. Arts
José Alberto Machado	President of the Scientific Council, academic staff, full professor, dept. History
Luís Miguel Sebastião	President of dept. Pedagogy and Education, academic staff, assistant professor, dept. Pedagogy and Education
Margarida de Sousa Cabral	Director of Academic Services, non-academic staff
Maria de Fátima Marques	Nursing School, academic staff

Thematic Work Group 2 – Research, International relations

Ana Mafalda Dourado	Coordinator of OTIC Office, non-academic staff
Ana Maria Silva	Director of Research Centre – Geophysics, academic staff, associate professor with aggregation, dept. Physics
António Heitor Reis (Coordinator)	Vice-Rector, academic staff, associate professor, dept. Physics
Manuel Joaquim Catita	Coordinator of International Relations Office, non-academic staff, postgraduate student
Maria João Marçalo	Director of Programme Committee – Applied Languages, academic staff, assistant professor, dept. Languages and Literatures
Nuno Rebelo dos Santos	Academic staff, assistant professor, dept. Psychology
Peter Joseph Carrott	Director of Programme Committee – Chemistry, Director of Research Centre – Chemistry, academic staff, associate professor with aggregation, dept. Chemistry

Thematic Work Group 3 - Financing

João Francisco Assunção	<i>Social Services, non-academic staff and invited assistant, dept. Management</i>
José Biléu Ventura	<i>Director of Administrative Services, non-academic staff and invited assistant, dept. Management</i>
José Manuel Caetano	<i>Academic staff, associate professor, dept. Economics</i>
Maria Cesaltina Louro	<i>Administrative Services, non-academic staff</i>
Miguel A. de Avelaz Pereira	<i>Academic staff, assistant professor, dept. Mathematics</i>
Nuno Manuel Dias (Coordinator)	<i>Administrative Services, non-academic staff</i>
Nuno Manuel Teixeira Antunes	<i>Administrative Services, non-academic staff</i>
Palmira Semião Lacerda	<i>Director of Programme Committee - Management, academic staff, assistant professor, dept. Management</i>
Paulo Jorge Ramos	<i>Administrative Services, non-academic staff</i>
Rui Manuel Mendes	<i>Nursing School, non-academic staff</i>

Thematic Work Group 4 – Quality

Ana Geraldês de Carvalho	<i>Quality Office, non-academic staff</i>
Carlos Vieira (Coordinator)	<i>Pro-Rector, academic staff, assistant professor, dept. Economics</i>
Dália Cristóvão	<i>Quality Office, non-academic staff</i>
Joaquim Lopes Godinho	<i>Coordinator of Computer Services, non-academic staff, postgraduate student</i>
Luís Miguel Raposo	<i>Quality Office, non-academic staff, postgraduate student</i>
Maria Manuela Santos	<i>Quality Office, non-academic staff</i>
Maria Margarida Saraiva	<i>Academic staff, assistant professor, dept. Management</i>
Maria Pia Rilho	<i>Coordinator of Planning Unit, non-academic staff</i>
Teresa Nogueiro	<i>International Relations Office, non-academic staff, postgraduate student</i>

Thematic Work Group 5 – Infrastructures, Regional Relations

Ausenda Cáceres Balbino (Coordinator)	<i>Vice-Rector, academic staff, associate professor with aggregation, dept. Geosciences</i>
Carlos Teles Cupeto	<i>Academic staff, assistant professor, dept. Geosciences</i>
Filipe Nogueira Alves	<i>Director of Technical Services, non-academic staff</i>
João Taleço	<i>Vice-President of Student's Union, undergraduate student</i>
Marco Aurélio Andrade	<i>Architect of IPPAR (Portuguese Institute of Architectural Heritage), external partners</i>
Marta da Cruz Silvério	<i>President of dept. Management, academic staff, assistant professor, dept. Management</i>
Paulo Fanha	<i>Architect, local council, external partners</i>

Thematic Work Group 6 - Internal Structure and Organization

António João de Sousa	<i>Academic staff, assistant professor, dept. Management</i>
Carlos Falcão Marques (Coordinator)	<i>Vice-Rector, academic staff, full professor, dept. Management</i>
Carlos Teles Cupeto	<i>Academic staff, assistant professor, dept. Geosciences</i>
Daniela dos Santos Castanho	<i>President of the Student's Union, undergraduate student</i>
Manuel Pereira dos Santos	<i>Academic staff, full professor, dept. Physics</i>
Maria Madalena Barros	<i>Administrative Services, non-academic staff</i>
Paulo Resende da Silva	<i>Academic staff, assistant professor, dept. Management</i>

Thematic Work Group 7 – Social Services and Student Support

Alexis Teixeira Soares	<i>Student's Union, undergraduate student</i>
Ana Cristina Centeno	<i>Coordinator of Student Support Unit, non-academic staff, postgraduate student</i>
António Marques Ramalhinho (Coordinator)	<i>Director of Social Services, postgraduation student</i>
Daniela dos Santos Castanho	<i>President of Student's Union, undergraduate student</i>
Isabel Maria Vieira	<i>Pro-Rector, academic staff, assistant professor, dept. Economics</i>
Maria Madalena Melo	<i>Academic staff, assistant professor, dept. Psychology</i>
Miguel Cachão	<i>Undergraduate student</i>

APPENDIX II: LIST OF PROGRAMME DEGREES OFFERED

1st Degree

- > Agronomy
- > Animal Science and Technology
- > Applied Mathematics
- > Basic Education
- > Biochemistry
- > Biology
- > Biotechnology
- > Chemical Engineering
- > Civil Engineering
- > Computer Science Engineering
- > Design
- > Drama
- > Earth and Atmosphere Sciences
- > Economics
- > Education Sciences
- > Geography
- > History
- > Information and Documentation Sciences
- > International Relations
- > Languages, Literatures and Cultures
- > Management
- > Mechatronics Engineering
- > Music
- > Nursing
- > Philosophy
- > Physics
- > Psychomotor Rehabilitation
- > Sociology
- > Sports and Physical Activity
- > Tourism
- > Visual Arts – Multimedia

Integrated Master

- > Architecture
- > Landscape Architecture
- > Psychology
- > Veterinary Medicine

2nd Degree (Master)

- > Agro-Food and Environmental Resources' Economics and Management
- > Agronomic Engineering
- > Anthropology
- > Applied Chemistry
- > Applied Languages and Translation
- > Archaeology and Environment
- > Biochemistry
- > Business Economics
- > Chemical Engineering
- > Chemistry (Teacher Training)

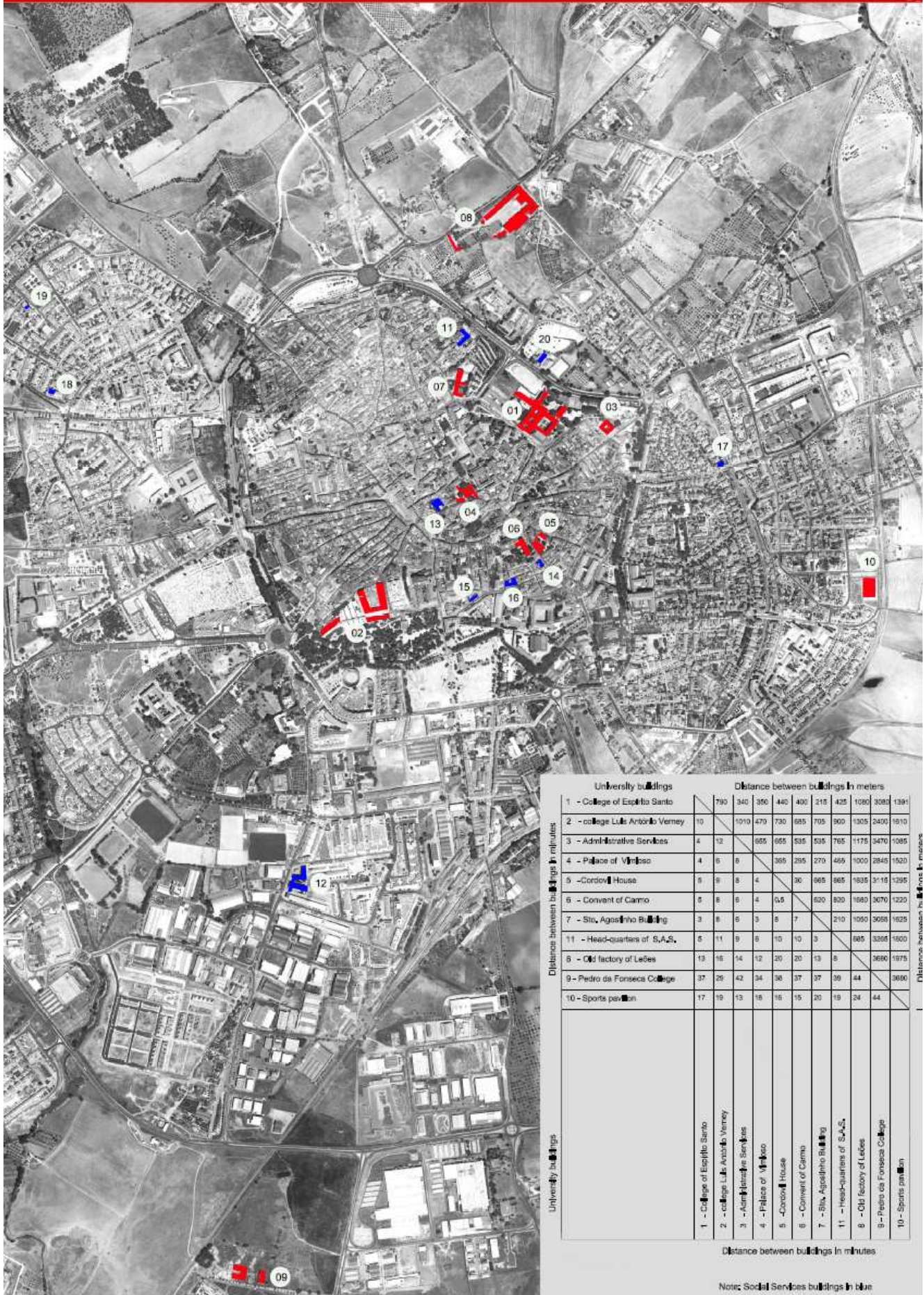
- > Civil Engineering
- > Comparative Literature and Poetry
- > Computer Science Engineering
- > Contemporary Literary Creations
- > Drama
- > Earth, Atmosphere and Space Sciences
- > Economics
- > Education
- > Energy and Environment
- > Environment Quality and Management
- > Environmental Chemical Analysis
- > Environmental Instrumentation
- > Exercise and Health
- > Food Technology
- > Geological Engineering
- > Health and Welfare of Elderly People
- > Health Socio-Organizational Intervention
- > Historical and Cultural Heritage Management and Valorisation
- > Historical European Studies
- > Iberian Studies
- > Information and Documentation Sciences
- > International Relations and European Studies
- > Landscape Sciences
- > Language and Communication Sciences
- > Lusophone Studies
- > Management
- > Mathematics and Applications
- > Mathematics for Education
- > Mechatronics Engineering
- > Monetary and Financial Economics
- > Music
- > Musicology
- > Natural Resources Management and Preservation
- > Philosophy
- > Preservation and Rehabilitation of Interior Waters
- > Preservation Biology
- > Quality Management and Agro-Food Marketing
- > Sociology
- > Sport Management and Administration
- > Statistical Modelling and Data Analysis
- > The Iberian South and the Mediterranean (Arab studies and Medieval History)
- > The Iberian South and the Mediterranean (Modern History)
- > Tourism
- > Visual Arts - Intermedia
- > Viticulture and Enology
- > Water Resources Engineering
- > Zootecnics

3rd Degree (programme)

- > Management
- > Mathematics

APPENDIX III: GEOGRAPHICAL POSITION OF UNIVERSITY MAIN BUILDINGS

Aerial photography of Évora with the location of the University buildings



APPENDIX IV: THE LEGAL FRAMEWORK OF THE PORTUGUESE HIGHER EDUCATION SYSTEM

This appendix summarises the main legal documents regulating the Portuguese higher education system in terms of its legal status, funding and quality assurance, and is adapted from the self-evaluation report submitted to ENQA in 2006. Some of the documents (signalled with *eng.*) can be provided on request to the evaluation team in English or accessed at http://www.qi.uevora.pt/legal_framework.htm.

ON UNIVERSITY AUTONOMY

The *Constitution of the Portuguese Republic* states that the *university autonomy* is a fundamental Constitutional right: “the universities are entitled, in the terms of the law, to statutory, scientific, pedagogic, administrative and financial autonomy” (CRP, article 76.2 in its original version).

The *Comprehensive Law on the Education System* (Law 46/86, of 14 October, amended by Law 115/97, of 19 September, and by Law 49/2005, of 30 August), where the scope and organisational structure of higher education and the conditions for access are defined. (*eng.*)

The *University Autonomy Law* (Law 108/88, of 24 September), establishing the basic principles for the autonomous organisation of the public universities and regulating the universities' constitutional right to a statutory, scientific, pedagogic, administrative, financial and disciplinary autonomy. According to the provisions in the Law, each university has the right to draw up its own statutes, plan and carry out scientific research, create and abolish study programmes and draw up their respective study plans. In terms of financial autonomy, the universities have their own assets, are free to manage the annual sums granted to them by the State and are able to earn income which is managed annually through privative budgets. The universities' governance is based on democratic principles, elections being held periodically e.g. for the Senate and the University Assembly, as well as for Rector. (*eng.*)

The *Law on the Statute and Autonomy of Polytechnic Higher Education Institutions* (Law 54/90, of 5 September), which follows many of the provisions applying to the universities, but is more restrictive in some areas, such as the creation of study programmes which remains subject to approval by the Ministry. (*eng.*)

The *Decree-Law 252/97*, of 26 September, which adopts special provisions to strengthen the administrative and financial autonomy in the public universities, introducing a greater flexibility in the rules applying to the management of staff, budget and patrimony. (*eng.*)

A revision of the universities autonomy law is expected for soon, adapting the legal framework to the growing demands on higher education institutions.

ON QUALITY AND EVALUATION

The *Law for the Evaluation of Higher Education* (Law 38/94, of 21 November), as a framework law establishing the basis for the quality assurance system. (*eng.*)

The *Decree-Law 205/98*, of 11 July, which regulates the development of Law 38/94 by establishing the general rules for the coordination and implementation of the quality assurance system and creating the National Council for the Evaluation of Higher Education (CNAVES). (*eng.*)

The *Decree-Law 125/99*, of 20 April, defining the legal regime for the research institutions, including the basis for the evaluation of the research units. (*eng.*)

The *Law for the Development and Quality in Higher Education* (Law 1/2003, of 6 January), which inserts an amendment in Law 38/94, clarifying the consequences from the results of the evaluation processes and determining the obligatory adoption of a rating of the

evaluated programmes, and introduces the concept of academic accreditation associated with fulfilment of the requisites necessary for the creation and operation of the higher education establishments or study programmes. In practice, this may be considered as a still-born law, since it was quickly forgotten and never regulated by the Government and consequently produced no effects at all. (eng.)

In February 2007 the Ministry of Science, Technology and Higher Education submitted, for public discussion, a proposal concerning the creation of the National Agency for the Evaluation and Accreditation of Higher Education.

ON FUNDING

The *Law for the Funding of Higher Education (Law 37/2003, of 22 August)*, which establishes the basis for the public funding of higher education obeying two basic principles – the adoption of objective criteria, performance indicators and standard reference values relating to the quality of teaching, and the respect for the tripartite relationship between the State, the institutions and the students. (eng.)

In 2007, direct basic funding for teaching was distributed to public universities according to a formula with the following parameters:

- The expected number of undergraduate and first year master students, based on past enrolments, completion and drop-out rates;
- Prescribed standard costs for each scientific domain (considering value from foreign countries);
- Real personnel costs for each institution;
- A quality parameter concerning teaching staff, expressed as the proportion of PhD holders in each institution;
- A performance parameter concerning the graduation rate of first degree programmes;
- A performance parameter concerning the rate per PhD holder of completed doctorates and masters;
- Imposed limits to institutional budget fluctuations, in comparison with previous year budget, with the objective of mitigating the risk of financial disruption.

ON OTHER ASPECTS

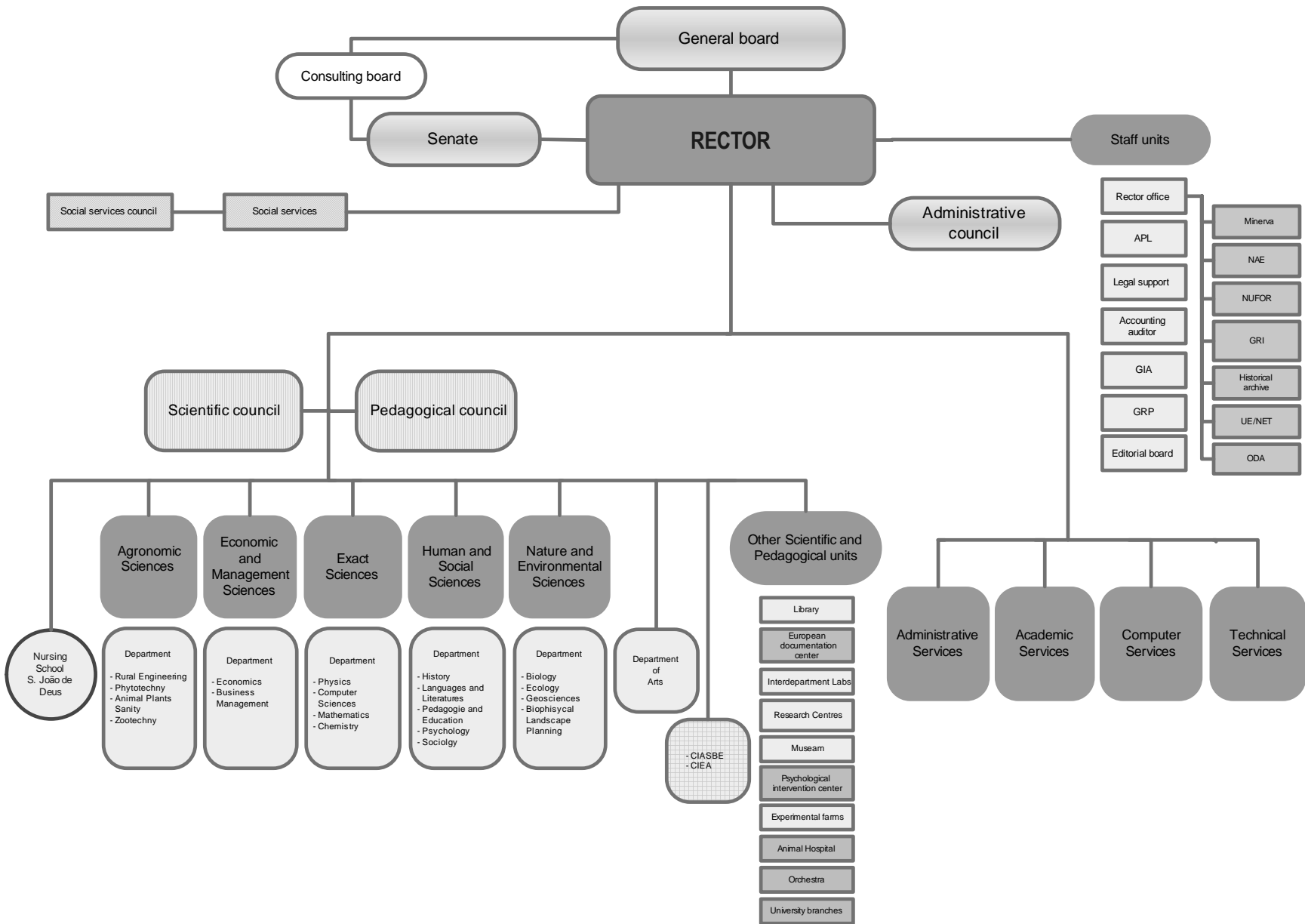
The *Decree-Law 448/79*, of 13 November, with the statutes for the academic careers of the university teaching staff, expected to change soon.

The *Decree-Law 185/81*, of 1 July, with the statutes for the academic careers of the polytechnic teaching staff, also expected a revision in the current year.

The *Decree-Law 42/2005*, of 22 February, concerning the development of tools to contribute to the creation of the European area of higher education, namely the new system of credits and the diploma supplement. (eng.)

The *Decree-Law 74/2006*, of 24 March, regulating the organisation of higher education in respect to the new degree structure established by Law 49/2005, according to the Bologna Process.

APPENDIX V: ORGANISATION CHART



NOTES:**Staff units:**

Rector office	Minerva	<i>Centre of Competencies for Information Technologies and Teaching</i>
	NAE	<i>Students' Support Services</i>
	NUFOR	<i>Centre for Staff Development</i>
	GRI	<i>International Relations Office</i>
	UE/NET	<i>E-Learning Support Unit</i>
	ODA	<i>Observatory for the Development of Alentejo</i>

APL	<i>Planning Unit</i>
-----	----------------------

GIA	<i>Information Support Unit</i>
-----	---------------------------------

GRP	<i>Public Relations Office</i>
-----	--------------------------------

Scientific and pedagogical units:

CIASBE	<i>Installing Commission for Health and Well-Being Sciences</i>
--------	---

CIEA	<i>Installing Commission for Architectural Programmes</i>
------	---

Research Centres:

- Centre of Ecology and Environment
- Centre of Mechatronics Engineering
- Centre of Studies on Mediterranean Ecosystems
- Centre of Studies on History and Philosophy of Sciences
- Centre of Studies and Advanced Training in Management and Economics
- Centre of Geophysics of Évora
- Centre of History of Art
- Centre of Research on Education "Paulo Freire"
- Centre of Research on Linguistics and Literature
- Centre of Research on Applied Mathematics
- Centre of Research on Sociology and Anthropology "Augusto da Silva"
- Centre of Research on Information Technologies
- Centre of Chemistry of Évora
- Interdisciplinary Centre of Political and Social Studies
- Interdisciplinary Centre on History, Cultures e Societies
- Institute of Mediterranean Agronomical Sciences

APPENDIX VI: UNDERGRADUATE AND POSTGRADUATE STUDENTS BY DEPARTMENTAL AREA

First degree students

DEPARTMENTAL AREAS AND NURSING SCHOOL	NUMBER OF STUDENTS				
	02/03	03/04	04/05	05/06	06/07
Humanities and Social Sciences	1958	1896	1848	1715	1449
Exact Sciences and Technologies	1515	1529	1486	1425	1131
Environmental and Natural Sciences	1460	1372	1248	1136	911
Economics and Management Sciences	978	886	841	803	699
Agronomic Sciences	1184	1134	1011	873	772
Arts	461	529	589	647	630
Health and Well-Being Sciences	69	103	142	161	168
Civil Engineering Programme Degree	0	49	97	141	173
Nursing	307	307	325	339	335
TOTAL	7932	7805	7587	7240	6268

Post graduate students

DEPARTMENTAL AREAS AND NURSING SCHOOL	NUMBER OF STUDENTS				
	02/03	03/04	04/05	05/06	06/07
Humanities and Social Sciences	386	512	725	927	721
Exact Sciences and Technologies	137	152	166	182	149
Environmental and Natural Sciences	168	184	328	334	234
Economics and Management Sciences	323	334	315	404	262
Agrarian Sciences	44	41	60	56	44
Arts	7	11	31	45	48
Health and Well-Being Sciences	0	0	0	12	13
Civil Engineering Programme Degree	0	0	0	0	1
Nursing	0	48	73	75	96
TOTAL	1065	1282	1698	2035	1568 *

*This value will increase with current year enrollments for post graduation courses.

APPENDIX VII: BUDGET

Consolidated budget by financing source (2003-2007)

(Euros)

Years	2003		2004		2005		2006		2007(3)	
	Values	%	Values	%	Values	%	Values	%	Values	%
Heading										
State Budget	34.452.286,66	68,77	34.303.333,41	65,17	36.384.171,41	67,47	35.000.767,35	66,19	33.226.601,00	64,56
<i>Personnel Expenditure</i>	29.359.529,22	85,22	30.234.009,44	88,14	32.437.931,36	89,15	32.580.720,88	93,09	30.462.650,50	91,68
<i>Operating Expenditure</i>	3.064.091,44	8,89	2.124.304,84	6,19	1.939.158,95	5,33	311.970,34	0,89	242.228,50	0,73
<i>Investment Expenditure</i>	150.012,00	0,44	131.158,13	0,38	145.149,10	0,40	151.729,13	0,43	113.600,00	0,34
<i>Scholarships</i>	1.878.654,00	5,45	1.813.861,00	5,29	1.861.932,00	5,12	1.956.347,00	5,59	2.408.122,00	7,25
PIDDAC	2.443.686,66	4,88	2.175.937,53	4,13	1.592.317,72	2,95	1.334.631,65	2,52	1.181.383,00	2,30
Own Revenue	13.200.383,64	26,35	16.160.953,19	30,70	15.953.330,95	29,58	16.540.902,45	31,28	17.057.615,00	33,14
Research	5.159.969,63	39,09	5.591.003,03	34,60	5.028.154,21	31,52	4.835.244,08	29,23	3.337.000,00	19,56
<i>Personnel Expenditure</i>	1.316.888,00	25,52	1.335.629,41	23,89	1.001.953,59	19,93	981.469,94	20,30	905.820,00	27,14
<i>Operating Expenditure</i>	3.235.786,57	62,71	3.344.653,62	59,82	3.262.589,58	64,89	2.874.334,33	59,45	1.839.598,00	55,13
<i>Investment Expenditure</i>	607.295,06	11,77	910.720,00	16,29	763.611,04	15,19	979.439,81	20,26	591.582,00	17,73
European Social Found⁽³⁾	1.152.031,70	8,73	1.286.532,34	7,96	887.530,91	5,56	1.106.942,79	6,69	191.921,00	1,13
<i>Personnel Expenditure</i>	235.000,00	20,40	400.932,34	31,16	245.500,00	27,66	329.505,00	29,77	71.000,00	36,99
<i>Operating Expenditure</i>	917.031,70	79,60	885.600,00	68,84	642.030,91	72,34	743.837,79	67,20	115.921,00	60,40
<i>Investment Expenditure</i>		0,00		0,00		0,00	33.600,00	3,04	5.000,00	2,61
Miscellaneous Revenue⁽⁴⁾	6.888.382,31	52,18	9.283.417,82	57,44	10.037.645,83	62,92	10.598.715,58	64,08	13.528.694,00	79,31
<i>Personnel Expenditure</i>	1.662.927,85	24,14	1.983.325,00	21,36	1.991.696,00	19,84	2.192.452,02	20,69	6.440.227,00	47,60
<i>Operating Expenditure</i>	4.790.570,46	69,55	6.261.835,00	67,45	6.851.649,83	68,26	6.712.763,33	63,34	5.957.280,00	44,03
<i>Investment Expenditure</i>	434.884,00	6,31	929.877,82	10,02	1.194.300,00	11,90	1.693.500,23	15,98	1.131.187,00	8,36
<i>Scholarships</i>	0,00	0,00	108.380,00	1,17	0,00	0,00	0,00	0,00	0,00	0,00
TOTAL	50.096.356,96	100,00	52.640.224,13	100,00	53.929.820,08	100,00	52.876.301,45	100,00	51.465.599,00	100,00

Note⁽¹⁾: The budgetary endowments include the ESESJD since 2005 year. The ESESJD budgetary endowments (State Budget + Miscellaneous Revenue) are € 1.965.624,67 in 2005 and € 2.263.279,66 in 2006.

Note⁽²⁾: The endowments presented in each year contains the budget balances of the last year.

Note⁽³⁾: Related to Education and Training, from projects PRODEP, POAP and POCI.

Note⁽⁴⁾: Miscellaneous revenue covers essentially: fees; revenues from the supply of goods and services; and sponsorships.

Financial Indicators by Activity (2003 - 2005)

(Euros)

Scientific-Pedagogical Units	Activities	2003		2004		2005	
		Values	%	Values	%	Values	%
Departmental Area of Agronomic Sciences	Teaching	4.347.422,94	60,24	4.526.548,91	59,78	4.276.028,17	59,04
	Research	2.869.474,53	39,76	3.045.959,90	40,22	2.966.988,19	40,96
	Total	7.216.897,48	18,39	7.572.508,80	18,36	7.243.016,36	16,86
Department of Rural Engineering	Teaching	1.118.705,66	61,02	1.152.799,94	60,60	1.027.459,87	59,66
	Research	714.673,01	38,98	749.424,33	39,40	694.797,14	40,34
	Total	1.833.378,67	25,40	1.902.224,28	25,12	1.722.257,02	23,78
Department of Crop Sciences	Teaching	1.089.550,66	61,89	1.132.488,28	61,62	1.142.973,92	61,41
	Research	670.932,48	38,11	705.369,50	38,38	718.172,67	38,59
	Total	1.760.483,14	24,39	1.837.857,78	24,27	1.861.146,59	25,70
Department of Animal and Plant Sanitary	Teaching	870.528,41	55,03	898.983,81	54,28	905.593,85	53,89
	Research	711.344,55	44,97	757.364,52	45,72	774.699,63	46,11
	Total	1.581.872,95	21,92	1.656.348,33	21,87	1.680.293,47	23,20
Department of Zootechnics	Teaching	1.268.638,22	62,15	1.342.276,87	61,68	1.200.000,53	60,63
	Research	772.524,50	37,85	833.801,55	38,32	779.318,75	39,37
	Total	2.041.162,72	28,28	2.176.078,42	28,74	1.979.319,28	27,33
Departmental Area of Nature and Environmental Sciences	Teaching	4.589.310,58	61,26	4.888.616,25	62,44	4.492.848,97	61,41
	Research	2.901.923,28	38,74	2.941.048,54	37,56	2.823.067,58	38,59
	Total	7.491.233,86	19,09	7.829.664,79	18,98	7.315.916,55	17,03
Department of Biology	Teaching	1.810.242,08	54,01	1.926.496,60	56,33	1.857.048,47	55,81
	Research	1.541.524,45	45,99	1.493.242,52	43,67	1.470.538,96	44,19
	Total	3.351.766,53	44,74	3.419.739,13	43,68	3.327.587,43	45,48
Department of Ecology	Teaching	628.815,83	64,27	808.054,16	65,81	614.403,08	63,20
	Research	349.653,82	35,73	419.898,28	34,19	357.792,34	36,80
	Total	978.469,65	13,06	1.227.952,44	15,68	972.195,42	13,29
Department of Geosciences	Teaching	1.269.881,34	67,74	1.261.603,51	67,53	1.263.477,87	67,06
	Research	604.693,11	32,26	606.528,05	32,47	620.744,25	32,94
	Total	1.874.574,45	25,02	1.868.131,56	23,86	1.884.222,13	25,76
Department of Biophysical Landscape Planning	Teaching	880.371,33	68,44	892.461,97	67,93	757.919,53	66,96
	Research	406.051,90	31,56	421.379,68	32,07	373.992,03	33,04
	Total	1.286.423,23	17,17	1.313.841,66	16,78	1.131.911,57	15,47
Departmental Area of Human and Social Sciences	Teaching	6.403.516,40	65,35	6.658.868,72	65,32	6.754.236,61	65,23
	Research	3.395.906,00	34,65	3.535.154,95	34,68	3.600.528,42	34,77
	Total	9.799.422,40	24,98	10.194.023,66	24,71	10.354.765,04	24,10
Department of History	Teaching	1.213.078,20	50,12	1.349.029,96	51,57	1.294.554,33	50,22
	Research	1.207.335,34	49,88	1.267.041,95	48,43	1.283.072,19	49,78
	Total	2.420.413,54	24,70	2.616.071,91	25,66	2.577.626,51	24,89
Department of Languages and Literatures	Teaching	1.448.341,31	72,36	1.491.400,46	72,16	1.477.356,51	71,94
	Research	553.132,07	27,64	575.409,03	27,84	576.301,20	28,06
	Total	2.001.473,38	20,42	2.066.809,49	20,27	2.053.657,71	19,83
Department of Pedagogy and Education	Teaching	2.261.627,49	72,74	2.253.818,36	72,33	2.205.547,48	72,42
	Research	847.743,69	27,26	862.141,10	27,67	839.970,86	27,58
	Total	3.109.371,18	31,73	3.115.959,46	30,57	3.045.518,34	29,41
Department of Psychology	Teaching	591.935,78	71,68	677.187,61	72,23	790.177,75	73,08
	Research	233.920,16	28,32	260.416,58	27,77	291.036,91	26,92
	Total	825.855,94	8,43	937.604,18	9,20	1.081.214,66	10,44
Department of Sociology	Teaching	888.533,62	61,60	887.432,33	60,88	986.600,55	61,79
	Research	553.774,74	38,40	570.146,30	39,12	610.147,27	38,21
	Total	1.442.308,36	14,72	1.457.578,63	14,30	1.596.747,82	15,42

(continues)

Financial Indicators by Activity (2003 - 2005) (continuation)

(Euros)

Scientific-Pedagogical Units	Activities	2003		2004		2005	
		Values	%	Values	%	Values	%
Departmental Area of Economic and Management Sciences	Teaching	2.958.133,25	71,48	2.984.083,94	70,76	2.921.897,54	70,60
	Research	1.180.198,16	28,52	1.233.354,91	29,24	1.216.816,89	29,40
	Total	4.138.331,42	10,55	4.217.438,85	10,22	4.138.714,43	9,63
<i>Department of Economics</i>	Teaching	1.514.649,94	71,98	1.522.347,84	71,36	1.537.461,15	71,30
	Research	589.742,13	28,02	611.073,60	28,64	618.866,63	28,70
	Total	2.104.392,07	50,85	2.133.421,44	50,59	2.156.327,78	52,10
<i>Department of Business Management</i>	Teaching	1.443.483,32	70,97	1.461.736,10	70,14	1.384.436,40	69,84
	Research	590.456,03	29,03	622.281,31	29,86	597.950,26	30,16
	Total	2.033.939,35	49,15	2.084.017,41	49,41	1.982.386,66	47,90
Departmental Area of Exact Sciences	Teaching	5.956.981,95	70,17	6.270.573,70	70,25	6.414.612,61	70,14
	Research	2.532.035,86	29,83	2.654.891,70	29,75	2.731.059,49	29,86
	Total	8.489.017,81	21,64	8.925.465,40	21,64	9.145.672,10	21,29
<i>Department of Physics</i>	Teaching	1.367.199,01	69,20	1.421.965,94	69,21	1.500.368,98	69,45
	Research	608.569,50	30,80	632.689,86	30,79	660.126,32	30,55
	Total	1.975.768,50	23,27	2.054.655,80	23,02	2.160.495,30	23,62
<i>Department of Computer Sciences</i>	Teaching	643.352,80	69,02	1.303.901,21	70,73	723.456,63	69,30
	Research	288.795,83	30,98	539.596,92	29,27	320.434,86	30,70
	Total	932.148,63	10,98	1.843.498,13	20,65	1.043.891,50	11,41
<i>Department of Mathematics</i>	Teaching	2.227.201,19	72,49	1.732.822,09	72,35	2.351.189,48	72,23
	Research	845.130,25	27,51	662.356,57	27,65	903.873,05	27,77
	Total	3.072.331,44	36,19	2.395.178,66	26,84	3.255.062,53	35,59
<i>Department of Chemistry</i>	Teaching	1.719.228,95	68,53	1.811.884,46	68,84	1.839.597,51	68,48
	Research	789.540,29	31,47	820.248,35	31,16	846.625,26	31,52
	Total	2.508.769,24	29,55	2.632.132,81	29,49	2.686.222,77	29,37
Department of Arts (1)	Teaching	1.201.921,54	72,30	1.281.650,65	72,32	1.434.639,57	72,47
	Research	460.497,79	27,70	490.420,89	27,68	544.967,03	27,53
	Total	1.662.419,32	4,24	1.772.071,54	4,30	1.979.606,60	4,61
Health and Well-Being Teaching Programmes (2)	Teaching	190.202,35	72,21	348.682,18	72,27	388.723,19	72,25
	Research	73.196,61	27,79	133.781,94	27,73	149.320,68	27,75
	Total	263.398,96	0,67	482.464,12	1,17	538.043,87	1,25
Architecture Teaching Programmes (2)	Teaching	126.925,16	72,22	183.568,02	72,22	448.399,92	72,25
	Research	48.817,37	27,78	70.603,08	0,17	172.188,36	27,75
	Total	175.742,53	0,45	254.171,10	0,62	620.588,29	1,44
Nursing School São João de Deus (3)	Teaching					1.531.223,63	93,92
	Research					99.205,62	6,08
	Total					1.630.429,25	3,79
Total	Teaching	25.774.414,17	65,69	27.142.592,36	65,80	28.662.610,21	66,71
	Research	13.462.049,60	34,31	14.105.215,91	34,20	14.304.142,27	33,29
	Total	39.236.463,78	100,00	41.247.808,27	100,00	42.966.752,48	100,00

⁽¹⁾ Without organisational dependency on any departmental area.⁽²⁾ Created as Installing Commission.⁽³⁾ Institutionally integrated in the University of Évora in 2005.

APPENDIX VIII: ACADEMIC AND NON-ACADEMIC STAFF**Academic staff by category**

CATEGORY	2004	2005	2006
Full Professor	20	22	24
Associate Professor	87	82	82
Assistant Professor	197	236	271
Assistant Lecturer	175	149	122
Probationary Assistant	11	4	3
Lectors	2	1	2
Invited Full Professor	6	5	5
Invited Associate Professor	9	10	6
Invited Assistant Professor	27	29	24
Invited Assistant Lecturer	67	53	73
Requested Invited Assistant Lecturer	19	16	14
TOTAL	620	607	626

Source: Administrative Services

CATEGORY (NURSING SCHOOL S. JOÃO DE DEUS: ESESJD)	2004
Assistant 1 st triennial	2
Assistant 2 nd triennial	1
Assistant 2 nd triennial with master or PhD degree	5
Adjunct Professor	12
Coordinator professor without aggregation	6
TOTAL	26

Academic Staff ETI by Departmental Areas and Departments

Departmental Areas and Departments	Full Professor	Associate Professor	Assistant Professor	Lector	Assistant Lecturer	Probationary Assistant	SUBTOTAL	Invited Full Professor (ETI)	Invited Associate Professor (ETI)	Invited Assistant Professor (ETI)	Invited Assistant Lecturer (ETI)	Monitor (ETI)	SUBTOTAL	Invited Assistant Lecturer	Requested Effective Professor	Requested Assistant Lecturer	Detached Assistant Lecturer	TOTAL
Agricultural Sciences Departmental Area	7	15	32,4	0	22	0	76,4	0	0,6	0,8	3	0	4,4	0	0	0	0	80,8
RURAL ENGINEERING DEPARTMENT	2	5	8	0	4	0	19	0	0	0,3	0,7	0	1	0	0	0	0	20
PLANT SCIENCES DEPARTMENT	3	3	9	0	3	0	18	0	0	0	1	0	1	0	0	0	0	19
VETERINARY MEDICINE DEPARTMENT	0	3	5	0	8	0	16	0	0,6	0,5	0,3	0	1,4	0	0	0	0	17,4
VEGETABLE AND ANIMAL SANITY DEPARTMENT	1	0	0	0	3	0	4	0	0	0	0	0	0	0	0	0	0	4
ZOOTECHNICS DEPARTMENT	1	4	10,4	0	4	0	19,4	0	0	0	1	0	1	0	0	0	0	20,4
Economic and Business Sciences Departmental Area	2	12,5	27	0	12	0	53,5	0	0	0,7	3,9	0	4,6	0	0	0	0	58,1
ECONOMICS DEPARTMENT	2	8	12	0	7	0	29	0	0	0,3	1,6	0	1,9	0	0	0	0	30,9
BUSINESS MANAGEMENT DEPARTMENT	0	4,5	15	0	5	0	24,5	0	0	0,4	2,3	0	2,7	0	0	0	0	27,2
Exact Sciences Departmental Área	5	20	63	0	40	1	129	0,3	1	4,5	0,3	0	6,1	2	0	0	0	137,1
PHYSICS DEPARTMENT	3	6	12	0	4	0	25	0	1	1,9	0	0	2,9	0	0	0	0	27,9
COMPUTER SCIENCE DEPARTMENT	0	3	5	0	7	1	16	0,3	0	0,3	0,3	0	0,9	0	0	0	0	16,9
MATHEMATICS DEPARTMENT	1	6	23	0	23	0	53	0	0	0	0	0	0	1	0	0	0	54
CHEMISTRY DEPARTMENT	1	5	23	0	6	0	35	0	0	2,3	0	0	2,3	1	0	0	0	38,3
Social and Human Sciences Departmental Area	4	18	72	2	29	0	125	0	0	1,5	9,5	0	11	7	1	2	0	146
HISTORY DEPARTMENT	2	3	15	0	2	0	22	0	0	1	4,5	0	5,5	0	0	0	0	27,5
LINGUISTICS AND LITERATURES DEPARTMENT	0	4	22	2	5	0	33	0	0	0	0	0	0	0	0	0	0	33
PEDAGOGY AND EDUCATION DEPARTMENT	1	6	20	0	9	0	36	0	0	0,5	2	0	2,5	7	1	2	0	48,5
PSYCHOLOGY DEPARTMENT	0	1	8	0	8	0	17	0	0	0	1	0	1	0	0	0	0	18
SOCIOLOGY DEPARTMENT	1	4	7	0	5	0	17	0	0	0	2	0	2	0	0	0	0	19
Nature and Environment Sciences Department. Area	2	10	57,6	0	11	1	81,6	0	0,4	1,9	4,9	0	7,2	0	0	0	0	88,8
BIOLOGY DEPARTMENT	1	4	23	0	4	0	32	0	0	1	1	0	2	0	0	0	0	34
ECOLOGY DEPARTMENT	1	2	5,6	0	0	0	8,6	0	0,4	0,5	1,8	0	2,7	0	0	0	0	11,3
GEOSCIENCES DEPARTMENT	0	2	22	0	2	0	26	0	0	0	0,3	0	0,3	0	0	0	0	26,3
LANDSCAPE PLANNING DEPARTMENT	0	2	7	0	5	1	15	0	0	0,4	1,8	0	2,2	0	0	0	0	17,2
Arts Proto-Departmental Area	1	2	13	0	9	0	25	1,2	0,2	6,6	11,8	0,3	20,1	1	0	0	0	46,1
ARTS DEPARTMENT	0	1	7	0	3	0	11	1	0,2	3	5,5	0	9,7	0	0	0	0	20,7
ARCHITECTURE PROTO- DEPARTMENT	0	1	5	0	2	0	8	0,2	0	1,6	3	0	4,8	0	0	0	0	12,8
VISUAL ARTS PROTO- DEPARTMENT	1	0	1	0	4	0	6	0	0	2	3,3	0,3	5,6	1	0	0	0	12,6
Not integrated in departmental areas																		
INSTALLING COMMISSION OF EDUCATIONS IN THE AREA OF THE HEALTH AND THE WELFARE	0	0	1	0	4	0	5	1,3	0	1	1	0,3	3,6	2	0	0	0	10,6
							495,5						57,0					567,5

Staff Academic Distribution by Age and Category

AGE		CATEGORY										Total
		Full Professor	Invited Full Professor	Associate Professor	Invited Associate Professor	Assistant Professor	Invited Assistant Professor	Assistant Lecturer	Invited Assistant Lecturer	Probationary Assistant	Lector	
Age Groups	[22 - 29]	0	0	0	0	0	0	4	3	1	0	8
	[30 - 39]	0	0	2	0	65	7	80	28	2	1	185
	[40 - 49]	4	1	34	1	155	6	39	20	0	0	260
	[50 - 59]	9	3	36	5	36	9	6	17	0	0	121
	[60 - 70]	12	2	10	1	10	2	0	1	0	0	38
TOTAL		25	6	82	7	266	24	129	69	3	1	612

Source: Administrative Services, 30/10/2006

Non-Academic Staff

STAFF GROUP	UÉ			ESESJD
	2004	2005	2006	2006
Superior Technician (1 st degree)	57	67	69	1
Administrative+ Technician + Professional Technician+ Computer Technician (Secondary Schooling)	205	208	210	12
Labourers (3 rd Cycle, 9 th year)	26	25	26	2
Assistant (Basic Schooling -1 st Cycle)	108	120	108	6
TOTAL	396	420	413	21

ESESJD: Nursing School S. João de Deus

Non-Academic Staff by Qualification

QUALIFICATIONS	UÉ			ESESJD
	2004	2005	2006	2006
Basic Schooling (1 st Cycle)	65	64	54	6
2nd Cycle (6 th year)	41	43	40	
3rd Cycle (9 th year)	63	63	49	4
Secondary Schooling	160	177	184	10
Bachelor	18	18	18	
First Degree	61	69	67	2
Master	4	6	10	
TOTAL	412	440	422	22

ESESJD: Nursing School S. João de Deus

Note: Reported situation in 31 of December of each year. Includes term contracts

Brief glossary of academic terms

The terms listed and defined below intend at clarifying the terminology in use in the portuguese higher education system concerning the academic staff categories and academic degrees, and is adapted from the Eurydice Database on Education Systems in Europe.

Agregação (Aggregation)

Degree of the university and polytechnic teaching careers obtained after successfully defending the scientific curriculum, submitting a report on the corresponding scientific area of teaching and giving a summarised viva voce lesson.

Assistente (Assistant Lecturer)

A category common to university and polytechnic teaching careers. They are expected to give practical and theoretical-practical lectures, do laboratory and field work, both in Master's and post-graduation courses, under professors' supervision. In universities they are recruited among probationary assistant lecturers with a minimum of two years' experience, or among other people holding an M-PhD degree or having passed a pedagogical aptitude and scientific capacity exam. In the polytechnic teaching career, recruiting is done through contest backed up by documentation among people holding a Master's degree and relevant CV.

Assistente do 1.º triénio (Assistant of first triennial)

A category of access to the polytechnic teaching career in which the candidate is hired for three years. It is being restructured.

Assistente do 2.º triénio (Assistant of second triennial)

A category of access to the polytechnic teaching career in which the candidate's contract is renewed for another three years. It is being restructured.

Assistente estagiário (Probationary Assistant Lecturers)

A category in the university teaching career. Responsible for giving practical or theoretical-practical lectures and conducting laboratory or field work in disciplines of the Master's courses. Recruitment is done through contest backed up by documentation among people holding a Master's degree with a final mark of, at least, Good.

Doutoramento (PhD)

An academic degree granted by a university after approval of an original thesis in a public discussion. It attests that an innovative and original contribution has been made to the advancement of knowledge and that a capacity exists for independent scientific work.

Ensino superior politécnico (Polytechnic Higher Education)

Higher education provided by a Polytechnic Institute, aimed at giving students a solid cultural and technical preparation, developing capacities of innovation and critical analysis and imparting scientific knowledge of a theoretical and practical kind, as well as its application, with a view to the exercising of professional activities. It has three-year duration (bachelor's degree) or four years (diploma of specialised higher education studies).

Ensino universitário (Higher Education)

Education provided by universities. It aims at granting a solid scientific and cultural preparation and to provide a technical expertise which permit those who acquire them to perform professional and cultural activities and to foster the development of creative and innovative capacities. It grants the following degrees: Bachelor's (3 years), Master's (4, 5 or 6 years), M-PhD and PhD.

Leitor (Lector)

A Portuguese or foreign lecturer especially hired by a university to teach a foreign language or, if at all necessary, to teach other subjects in Master's degree courses.

Licenciatura (First Degree)

A degree granted by a higher education institution after the successful conclusion of a four-, five- or six-year course, as proof of solid scientific, technical and cultural qualification. It will allow specialisation in a specific area and an adequate professional intervention.

Licenciatura em ensino (First Degree in Teacher Training)

A degree granted by a higher education institution after the successful conclusion of a four- or five-year course made up of a scientific and a pedagogical component, and integrating training as a teacher. It constitutes professional qualification for teaching basic (2nd and 3rd cycles) and secondary education in the various disciplines.

Mestrado (Master)

An academic degree granted by a university to an individual who has successfully completed a specialised course and written an original dissertation which has been discussed and approved, thus attesting the person's research capacity. Only people holding a Master's degree can be candidates to an MPhD.

Pós-graduação (Post-graduation not conferring an academic degree)

Post-degree training, of varying length, given in higher education establishments. This qualification is not an academic degree but, if successfully completed, a diploma is awarded.

Professor adjunto (Adjunct Professor)

A category of the polytechnic teaching career. They are responsible for the following: theoretical, practical and theoretical-practical lectures, teacher training, seminars and laboratory and field work, organising and monitoring scientific investigation, co-operating in the co-ordination of their subjects or scientific areas. They are recruited among assistant lecturers with a minimum of three years' experience and holding an M-PhD, or an equivalent degree, after a contest backed up by documentation.

Professor associado (Associate Professor)

A category of the university teaching career. They are expected to assist full professors, give lectures in Master's and post-graduation courses, conduct seminars, give practical or theoretical-practical lectures, direct laboratory and field work and supervise research work. They are appointed either through transfer or contest backed up by documentation and must hold a PhD degree and have at least five years' experience as university professors.

Professor auxiliar (Assistant Professor)

A category of the university teaching career. They are expected to give lectures in Master's and post-graduation courses, give practical or theoretical-practical lectures, participate in laboratory and field work. They are recruited among assistant lecturers or other people holding a PhD degree.

Professor catedrático (Full Professor)

A category of the university teaching career. They are responsible for the pedagogical and scientific co-ordination of a discipline, a group of disciplines or a department, besides giving lectures in Master's and post-graduation courses, conducting seminars, giving practical or theoretical-practical lectures, directing laboratory and field work. They also supervise the other professors' pedagogical and scientific activity, co-ordinate programmes and conduct and supervise research work. They are appointed either through contest backed up by documentation among associate professors, invited associate professors and invited full professors with "agregação" and at least three years' experience as university professors in those categories.

Professor convidado (Invited Professor)

A person of recognised scientific, pedagogical or professional competence, appointed to work as a university professor. Recruitment is done through an invitation supported by a majority of two thirds of the university's scientific board.

Professor coordenador (Coordinator Professor)

A category in polytechnic higher education. The co-ordinating professor's responsibility covers the pedagogical, scientific and technical co-ordination of teaching and research activities within a specific discipline or scientific area, the monitoring of assistant professors' and assistant lecturers' work in his discipline or area, lecturing (theoretical, theoretical-practical and practical lectures) and supervision of training, laboratory and field work. Recruitment is done through public exams among assistant professors with a minimum of three years' experience, or other candidates holding a PhD, or an equivalent degree, in that area.

Professor visitante (Visiting Professor)

Teacher from a foreign tertiary education institution, who is recruited by invitation from among teachers of recognised merit and prestige, to teach in Portuguese tertiary education establishments in the same areas as in his/her home institution. The precise duties of teachers in this category are specified in their contract which is valid for 1 year renewable subject to a decision by the academic council of the institution concerned.

Pró-reitor (Pro-rector)

Academic chosen by the principal to perform specific tasks for a limited time.

Reitor (Rector)

Highest post in a university. The "reitor" officially represents the institution and is co-responsible for its policies and administration/ management.

Vice-reitor (Vice-Rector)

Has the duty of assisting the principal and, if necessary, substituting the principal if there is any prolonged period of incapacity. The position of vice-principal is exclusive and involves no teaching. The contractual period is for four years and can be renewed under the terms of the statutes in existence.

APPENDIX IX: INFRASTRUTURES

Main campus buildings

	NET AREA m ²										GROSS AREA m ²	NOTES		
	Classrooms	Laboratories	Research Centres	Education Support Areas	Food & Beverage and Social Facilities	Services	Teachers' Offices and Meeting Rooms	Workshops and Storehouses	Other Facilities*	Total Net Area		Date of Construction	Date of Last Rehabilitation Works	Condition of the Facilities
ÉVORA BUILDINGS														
Espírito Santo	1.351	695	16	2.142	590	1.050	787	594	2.418	9.642	13.139	XVI-XVIII Cent.	1996	Reasonable
Verney Phases I/II	1.387	2.502	112	593	947	48	2.108	502	3.046	11.245	14.227	XIX Cent.	1996	Good
Verney Phase III		1.125	65				163	148	655	2.155	2.480	2000	-	Good
Vimioso	567	173	205	186	442		354	103	748	2.777	3.688	XVI-XIX Cent.	1994	Good
Cordovil	574	30	15	88		270	275	134	391	1.777	2.330	XVI Cent.	1994	Reasonable
Carmo	149	517					155	52	574	1.447	2.045	XVI Cent.	1998	Reasonable
Pedro da Fonseca	445	303	440	51	50	10	605	11	640	2.556	2.896	1994	2004	Good
Leões	407	2.165				10	146	149	3.210	6.086	7.686	1916	1998	Bad
Sports Pavillion		67				16	41		1.806	1.930	2.051	1993	-	Bad
Santo Agostinho				75		380		310	536	1.301	1.732	XVI Cent.	2001	Reasonable
Antiga Cadeia				61	70	577		279	428	1.416	2.252	XVI Cent.	1998	Good
TOTAL ÉVORA	4.880	7.576	853	3.198	2.099	2.361	4.633	2.280	14.452	42.332	54.527			
MITRA BUILDINGS														
Regentes Agrícolas	143	249	348	103	410	18	712	60	674	2.717	3.353	1970	-	Reasonable
Biology Department			58		10		305	7	160	541	699	1970	-	Bad
Classrooms and teaching labs	802	71	243	175	121	76		145	863	2.495	3.012	1970	-	Reasonable
New Facilities	267	783	1.327			40	341	720	1.144	4.623	5.410	1994	-	Good
Pátio Matos Rosa	50	105	179				96	98	995	1.523	2.236	XVI Cent.	1995	Bad
Bom Jesus Convent					132	20		22	630	803	1.218	XVI Cent.	1979	Reasonable
Poultry facilities		223	260						31	515	649	XVI Cent.	1995	Reasonable
Veterinary Hospital	59	604	253	43	16		511	12	2.329	3.826	4.454	1970	2004	Good
Incinerator		150							34	183	210	1998	-	Good
Agricultural Machinery	116	70	361					341	44	932	1.057	1970	-	Reasonable
Wine cellar, oil-press			300				27		608	935	1.142	1970	-	Reasonable
Barn			335						23	358	383	1970	-	Reasonable
Carpentry		94	89					279		462	483	1970	-	Reasonable
Pig stall			60						756	816	925	1970	-	Reasonable
Milk parlour and stall		45	146						47	238	279	2001	-	Good
Riding School			46							46	52	1980	-	Reasonable
Sheep, goats stall									436	436	450	1990	-	Good
Animal metabolic unit			160						236	396	435	2004	-	Good
TOTAL MITRA	1.437	2.393	4.166	321	690	154	1.992	1.683	9.010	21.845	26.447			
TOTAL UNIV. OF ÉVORA	6.317	9.969	5.019	3.518	2.788	2.515	6.625	3.963	23.462	64.177	80.973			

* Includes Sports Facilities, Animal Housing, Accommodation, Circulation Areas, Toilets, Technical Facilities, among others.

University branches

	NET AREA m ²										GROSS AREA m ²	NOTES		
	Classrooms	Laboratories	Research Centres	Libraries	Education Support	Services	Meeting Rooms Teachers' Offices and	Technical Support	Other Facilities*	Total Net Area		Date of Construction	Date of Last Rehabilitation Works	Condition of the Facilities
University Branches														
ALTER-DO-CHÃO	280						27		483	790	1.229			
ESTREMOZ	132	93			1.094	85			96	1.500	2.014			
MARVÃO		93					14	2	84	193	278			
SINES		83					25	8	51	167	306			
TOTAL	412	269			1.094	85	66	10	714	2.650	3.827			

Infrastructures: Student ratios, gross and net areas

Number of first degree students	Total gross area	Gross area by student	Total net area	Net area by student
	m ²	m ²	m ²	m ²
6.745	80.635,00	11,95	62.954,00	9,33

Infrastructures: Staff ratios, net areas

Number of academic staff	Teacher offices net area	Net area by teacher	Number of non-academic staff	Net area of the Services	Net area by non-academic staff
	m ²	m ²		m ²	m ²
631	6.718,00	10,65	400	2.776,00	6,94

APPENDIX X: INDICATORS OF QUALITY MONITORING

- Number of scientific papers in international journals referenced in the ISI Web of Knowledge
- Number of research centres classified as “very good” or “excellent” by the FCT
- Number of research projects submitted for financing
- Total amount of financing for submitted research projects
- Number of financed research projects
- Budget of financed research projects
- Number of research scholarship holders
- Number of students by free access computer
- Number of hours without internet service
- Percentage of first degree course units using the e-learning (moodle) platform
- Average rates of academic success in course units
- Average rates of abandonment in course units
- Percentage of students enrolled in course units not attending evaluation
- Graduation rate by undergraduate degree
- Graduation rate by postgraduate degree
- Percentage of marks' lists delivered before the deadline by academic staff
- Percentage of delivered course summaries
- Academic staff involved in programs of international mobility
- Foreign academic staff involved in programs of international mobility with the UÉ
- Number of new enrolments
- Rate of new entrants inhabiting in the Évora district
- Number of active students
- Number of students enrolled in programmes not conferring degree
- Number of graduates
- Rate of academic staff qualification
- Ratio students/teachers by course, in accordance with the benchmark ratio
- Percentage of doctorates in academic staff
- Rate of graduates' employability, to be regularly calculated on the basis of surveys
- Classroom space by student
- Number of contracts for services to the community
- Value of contracts for services to community
- Number of signed protocols
- Commercialisation of research: patents granted
- Percentage of new enrolled students from Portuguese speaking foreign countries
- Advertisements in the press

- Secondary schools involved in the UÉ's information campaigns
- Fairs and forums where UÉ's information packages are distributed
- Press Releases
- Students visiting the UÉ for the Meetings with the Sciences, Technologies and the Arts
- Students enrolled in international mobility programs
- Foreign students enrolled in international mobility programs with the UÉ
- Percentage of students benefiting from scholarships
- Percentage of students lodged in UÉ's residence halls
- Percentage of space providing access for students with disabilities
- Average waiting time for an acquisition process
- Approximate cost of each programme degree, by student
- Total income achieved by the university
- Income from undergraduate students' fees
- Income from postgraduate students' fees
- Percentage of own receipts in UÉ's total Income
- Value of own receipts
- Administrative costs of functioning as a percentage of total costs
- Equivalence processes instructed by the Mendeliev Office
- Academic staff who successfully attended NUFOR training sessions
- Non-academic staff who successfully attended NUFOR training sessions